

# **A Brief Introduction of Liftech United Technologies**



Shanghai Liftech



Ansh Industries



# Majors projects using our safety products





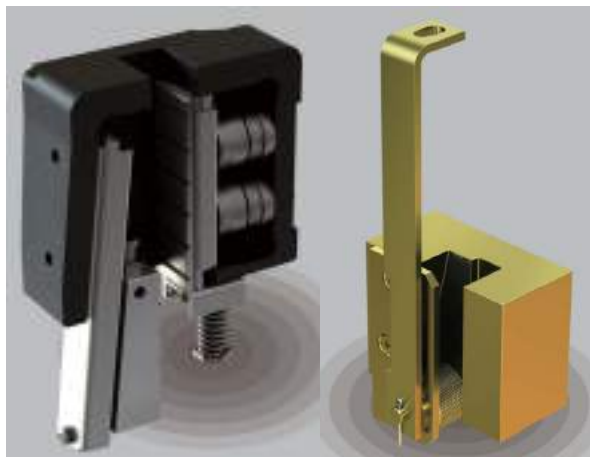
# Four test towers in Shanghai and one in Italy



- Maximum nominal speed 4m/s for safety gear and 7m/s for buffer (6m/s for safety gear and 13m/s for buffer after modification), maximum load upto 12.5t, certified by the Shanghai Jiangtong University National Elevator Test Laboratory
- High speed automatic lift and release for volume testing

# Safety Gear

Liftech



LSG01

LSG02



LSG03



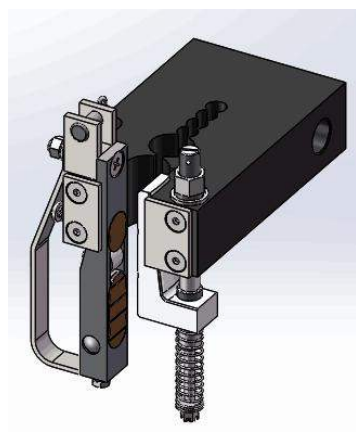
LSG05



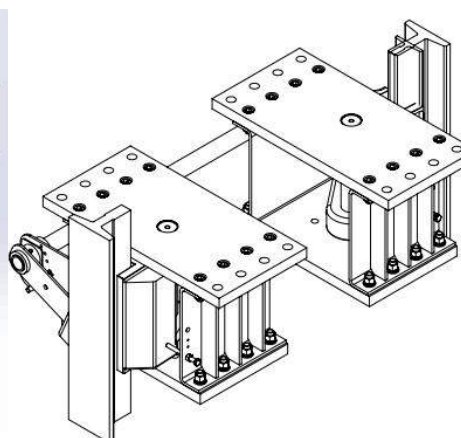
LSG06



LSG08



LSG10



LSG16



LSG20



LSG21

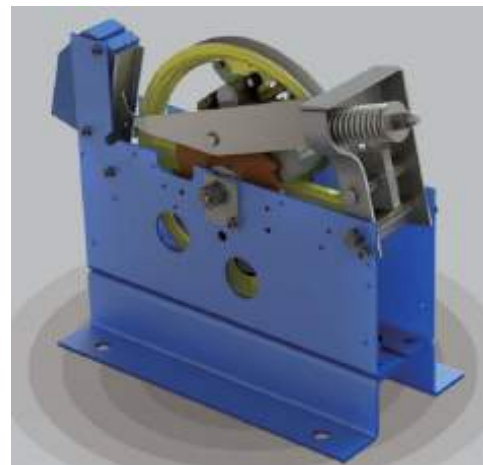
# List of Overspeed Governor



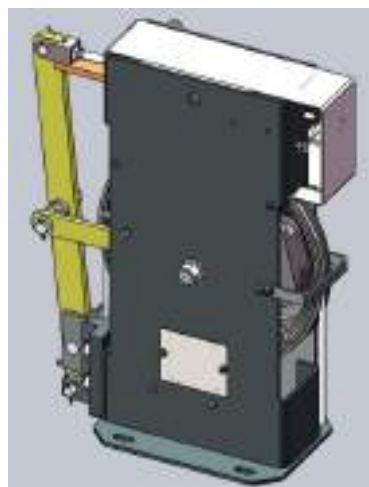
LOG01



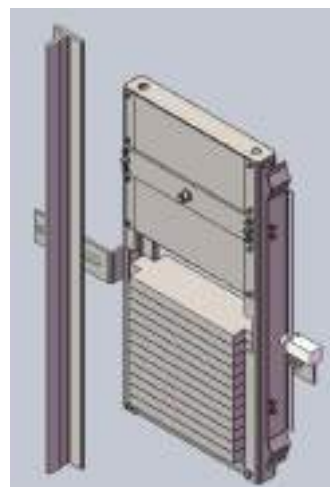
LOG02



LOG03



LOG20



LTD20



# Buffers – a complete coverage

OBC10B

1.0m/s



OBC16C/18/20C/25C

1.6m/s~2.5m/s



OBHs

3.0m/s~5.8m/s

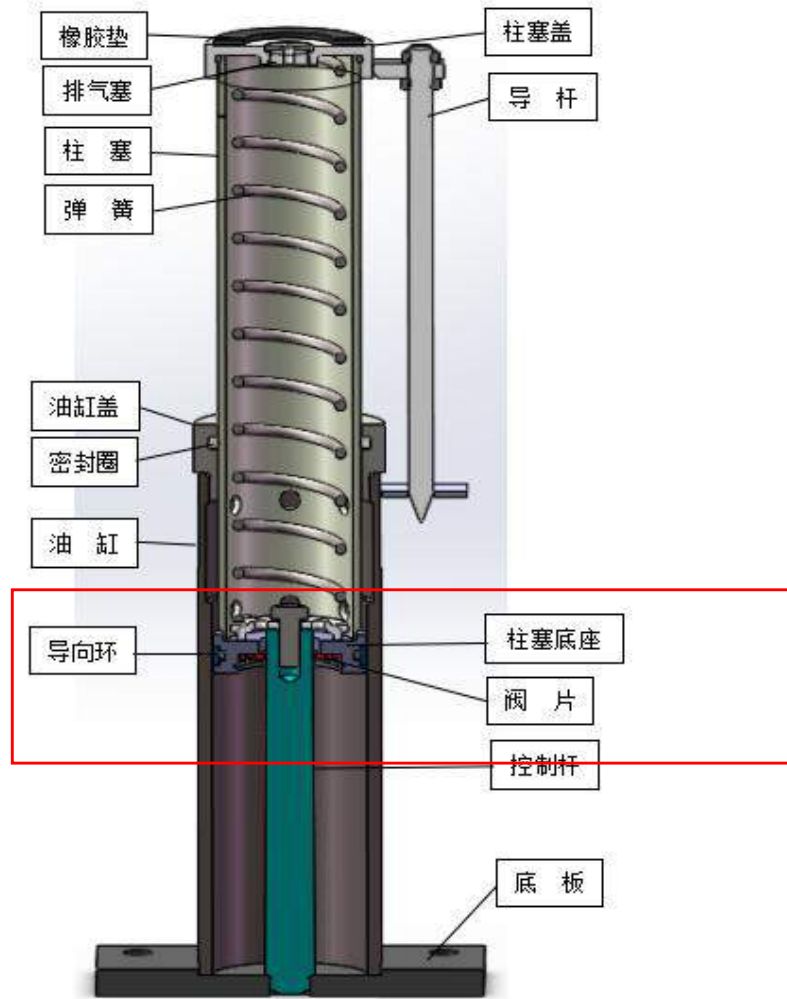


OBs

1.6m/s~5.6m/s



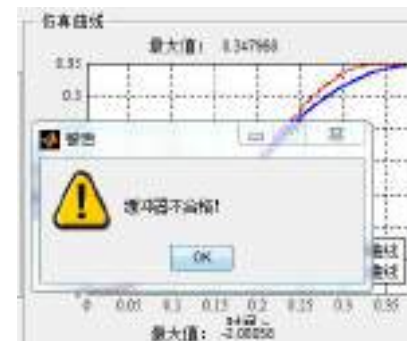
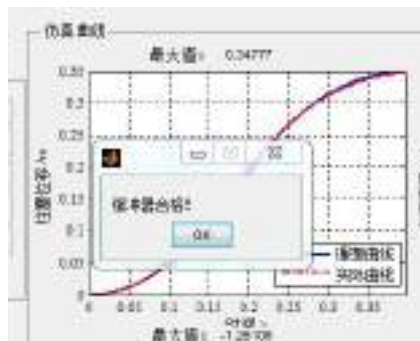
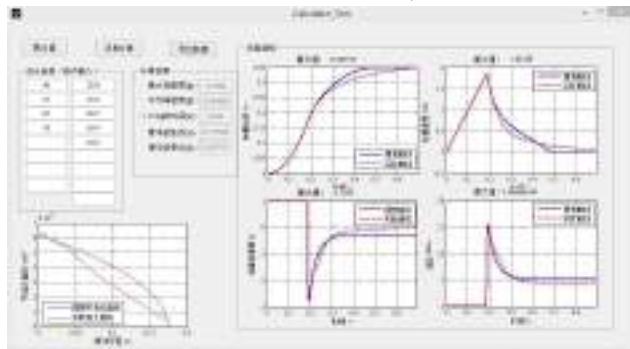
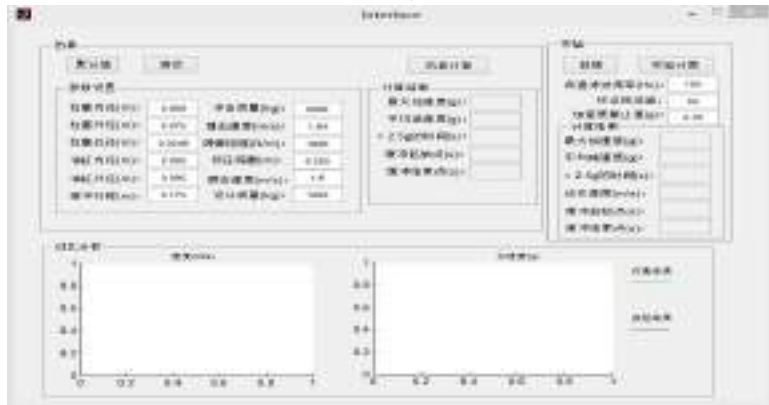
Proprietary self-adjustable valve with precision cold drawn pipe with special surface treatment offering the highest reliability and lower manufacturing costs



- All OBC-B, OBC-C, OBH and OB series are using the Hydronic Lift proprietary self-adjusting orifice valve technology with precision cold drawn pipe by special surface treatment
- All OBC-B, OBC-C, OBH and OB series are using the inner spring design
- 3 design engineers and 2 production engineers in Italy
- 8 design engineers and 5 production engineers in China



# Self-developed proprietary design software based on Matlab for easy simulation



- Software calculations based on formulas coded using Matlab
- User friendly interface for inputing parameters
- Instant simulation of performance data and curves, and comparison to the GB and EN codes

# Parameters of Buffer

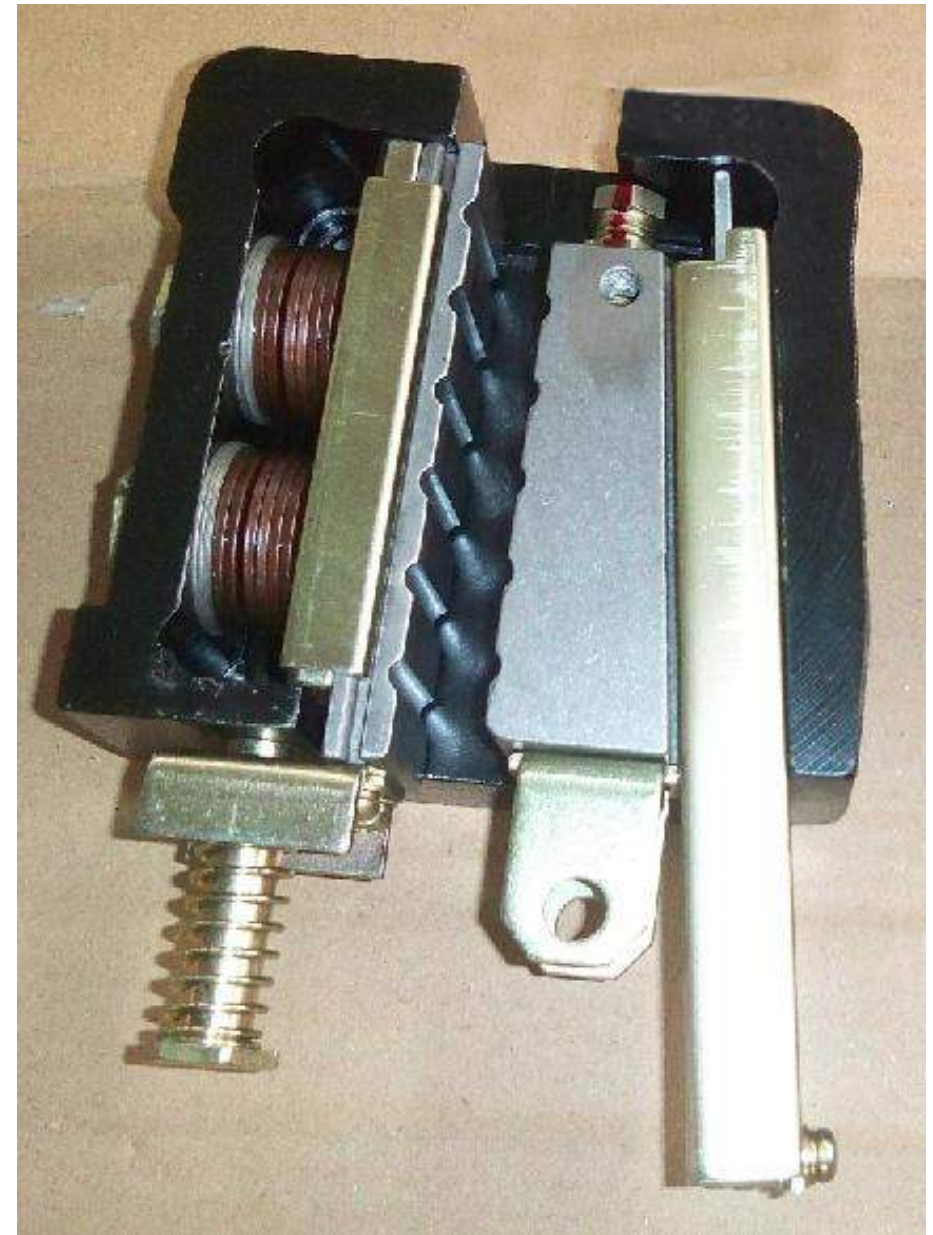
型号	额定速度 (m/s)	最大撞击速 度(m/s)	最大质量 (kg)	最小质量 (kg)	缓冲行程 (mm)	自然高度 (mm)	注油量 (L)	底板尺寸(mm)	底板孔距 (mm)	底板孔径 (mm)
OBC15B	≤1.5	1.72	3500	600	158	500	0.66	140*140*14	100*100	4-φ14
OBC15C	≤1.5	1.72	4600	450	160	500	0.7	190*140*14	150*100	4-φ14
OBC16B	≤1.6	1.84	3500	600	175	536	0.7	190*140*14	150*100	4-φ14
OBC16C	≤1.6	1.84	4600	450	175	540	0.75	190*140*14	150*100	4-φ14
OBC18B	≤1.75	2.01	3500	600	210	626	0.9	190*140*14	150*100	4-φ14
OBC18C	≤1.75	2.01	4600	450	210	600	0.9	190*140*14	150*100	4-φ14
OBC20B	≤2	2.3	4300	600	275	796	1.18	190*140*14	150*100	4-φ14
OBC20C	≤2	2.3	4600	450	275	780	1.15	190*140*14	150*100	4-φ14
OBC25BA	≤2.5	2.88	4550	600	435	1196	1.8	190*140*14	150*100	4-φ14
OBC25C	≤2.5	2.88	4600	450	425	1125	1.8	190*140*14	150*100	4-φ14
OBC30C	≤3.0	3.45	4600	800	640	1696	5.4	190*140*14	150*100	4-φ14

## Parameters of Safety gear

型号Type: LSG01



- $P+Q=800\sim 3000\text{Kg}$  Type I
- $P+Q=3000\sim 3600\text{Kg}$  Type II
- 导轨宽度WR:9,10,15.88,16mm
- 导轨润滑状态:Oil or Dry
- 额定速度RS:  $\leq 3.0\text{m/s}$
- 动作速度TS:  $\leq 3.92\text{m/s}$





# Parameters of Safety gear

Liftech

型号Type: LSG03



- P+Q=1000~2600Kg TypeI
- P+Q=1000~5000Kg TypeII
- 导轨宽度WR:9,10,15.88,16mm
- 导轨润滑状态:Oil or Dry
- 额定速度RS:  $\leq 2.5\text{m/s}$
- 动作速度TS:  $\leq 3.25\text{m/s}$

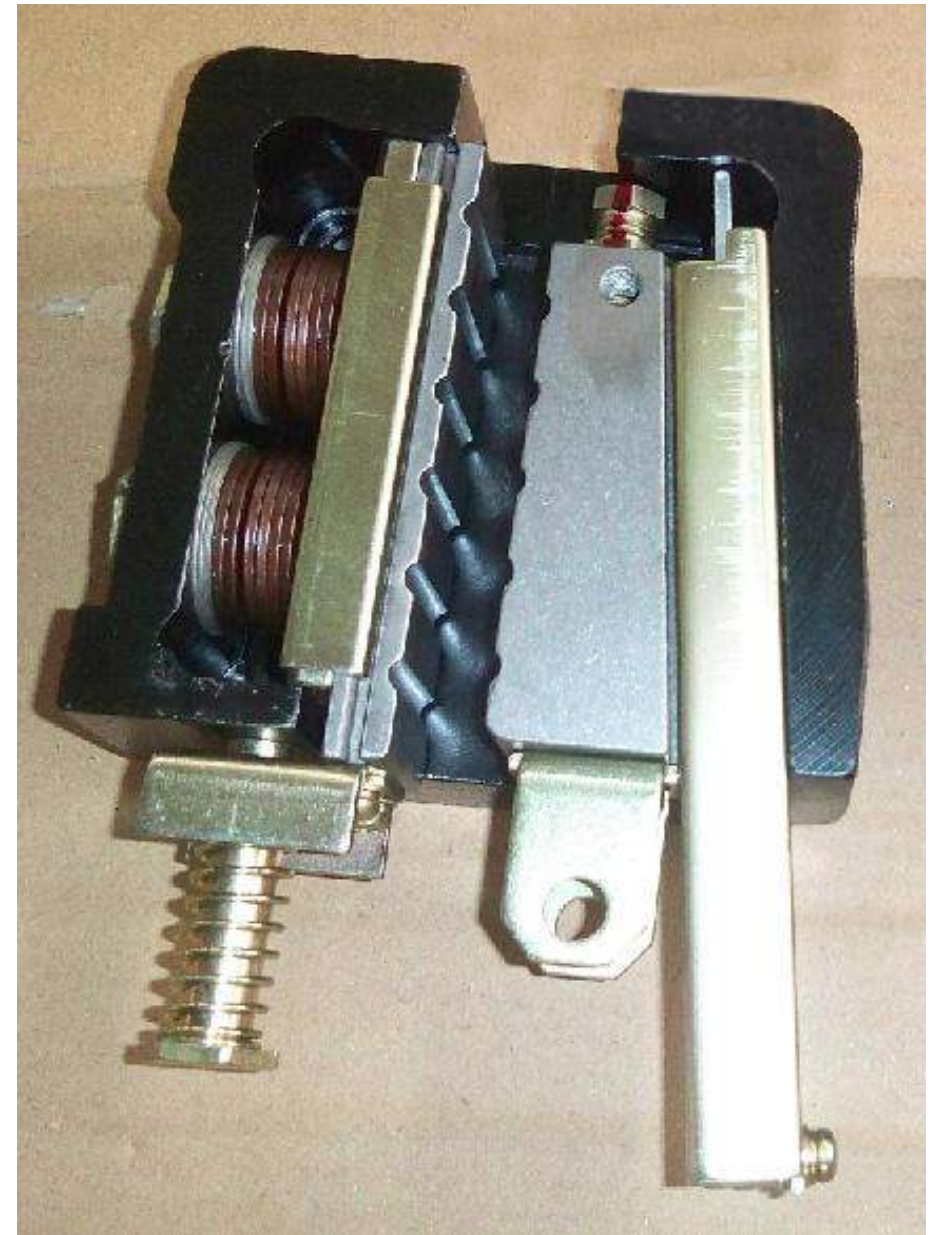


## Parameters of Safety gear

型号Type: LSG06



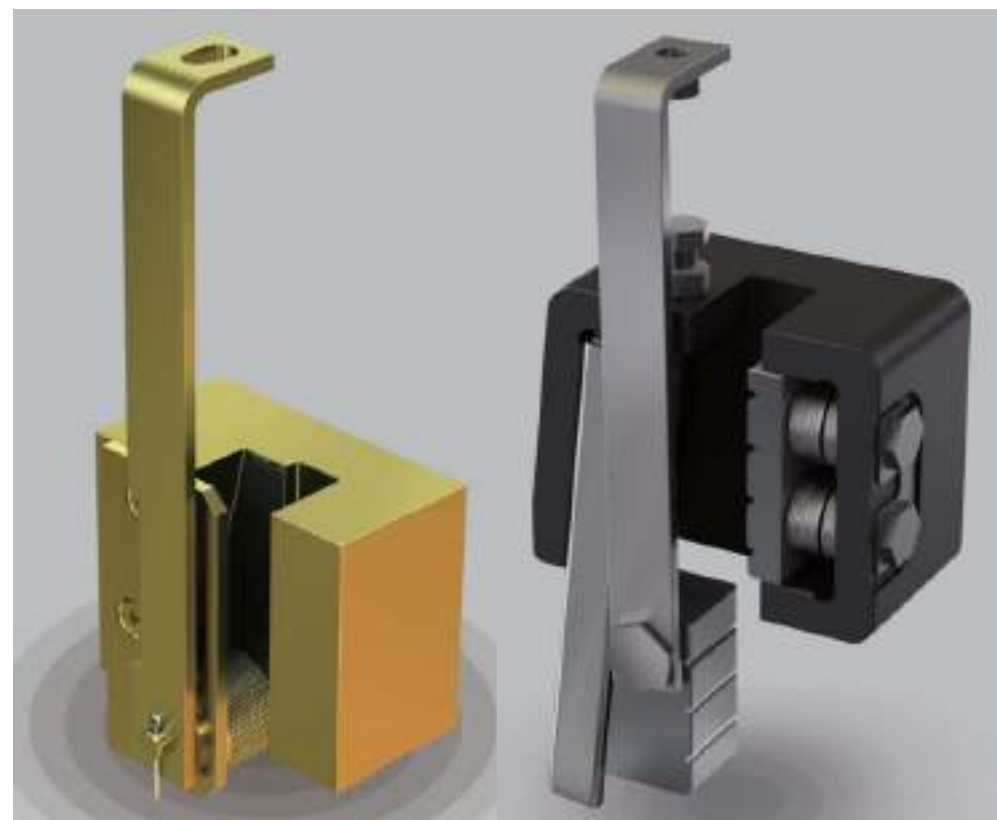
- $P+Q=800\sim3000\text{Kg}$
- 导轨宽度WR:9,10,15.88,16mm
- 导轨润滑状态:Oil or Dry
- 额定速度RS:  $\leq 3.0\text{m/s}$
- 动作速度TS:  $\leq 3.92\text{m/s}$
- 为蒂森设计 For Thyssenkrupp



## Parameters of Safety gear

型号Type: LSG02&LSG08

- $P+Q=400\sim 1200\text{Kg}$
- 导轨宽度WR:9,10mm
- 导轨润滑状态:Oil or Dry
- 额定速度RS: $\leq 1.0\text{m/s}$ -LSG08
- 动作速度TS: $\leq 1.5\text{m/s}$ -LSG08
- 额定速度RS: $\leq 0.63\text{m/s}$ -LSG02
- 动作速度TS: $\leq 0.8\text{m/s}$ -LSG02
- 为别墅梯设计 For Home lift



LSG02

瞬时式

Instantaneous

LSG08

渐近式

Progressive

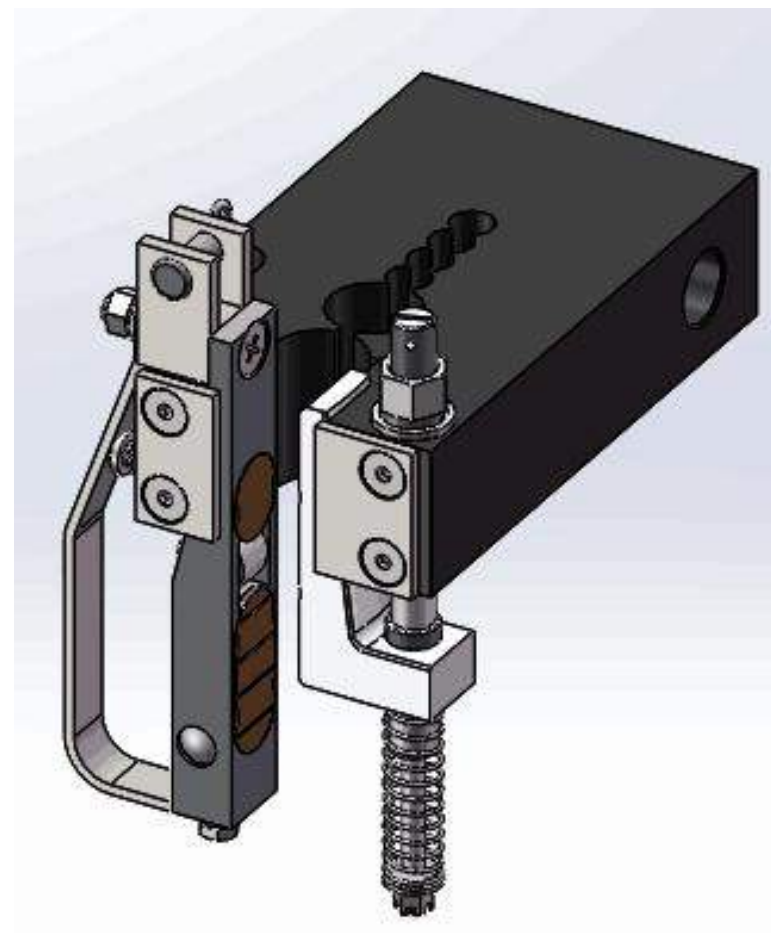


# Parameters of Safety gear

Liftech

型号Type: LSG10

- $P+Q=630\sim 7000\text{Kg}$
- 导轨宽度WR:9,10,16,19mm
- 导轨润滑状态:Oil or Dry
- 额定速度RS: $\leq 4.0\text{m/s}$



# Parameters of Safety gear

型号 Type	接口代号 Interface	速度m/s RS	总允许质量kg Total mass	导轨润滑 Dry/Oil	导轨宽度 mm Width of Guide Rail
LSG10	A	0.25-2.5	4000-7000	Oil	16, 19
		2.5-4.0	2800-6300	Dry	16, 19
	B	0.25-2.5	2900-5200	Oil	15.88, 16
		0.25-2.5	2600-4200	Dry	15.88, 16
	C	0.25-2.5	1600-3200	Oil	9, 10, 15.88, 16
		0.25-2.5	1600-3200	Dry	9, 10, 15.88, 16
	D	0.25-2.5	650-2000	Oil	9, 10, 15.88, 16
		0.25-2.5	650-2000	Dry	9, 10, 15.88, 16

## Parameters of Safety gear

型号Type: LSG20

- $P+Q=2500\sim6000\text{Kg}$
- 导轨宽度WR:16,19mm
- 导轨润滑状态:Oil or Dry
- 额定速度RS: $\leq 3\sim 4\text{m/s}$
- 动作速度TS: $\leq 5.6\text{m/s}$

计划2018年取GB报告





## Parameters of Safety gear

型号Type: LSG21

- $P+Q=2500\sim 6000\text{Kg}$  -6m/s
- $P+Q=6000\sim 12000\text{Kg}$  -1m/s
- 导轨宽度WR:16,19mm
- 导轨润滑状态:Oil or Dry
- 额定速度RS: $\leq 4\sim 6\text{m/s}$
- 动作速度TS: $\leq 8.3\text{m/s}$

无GB报告

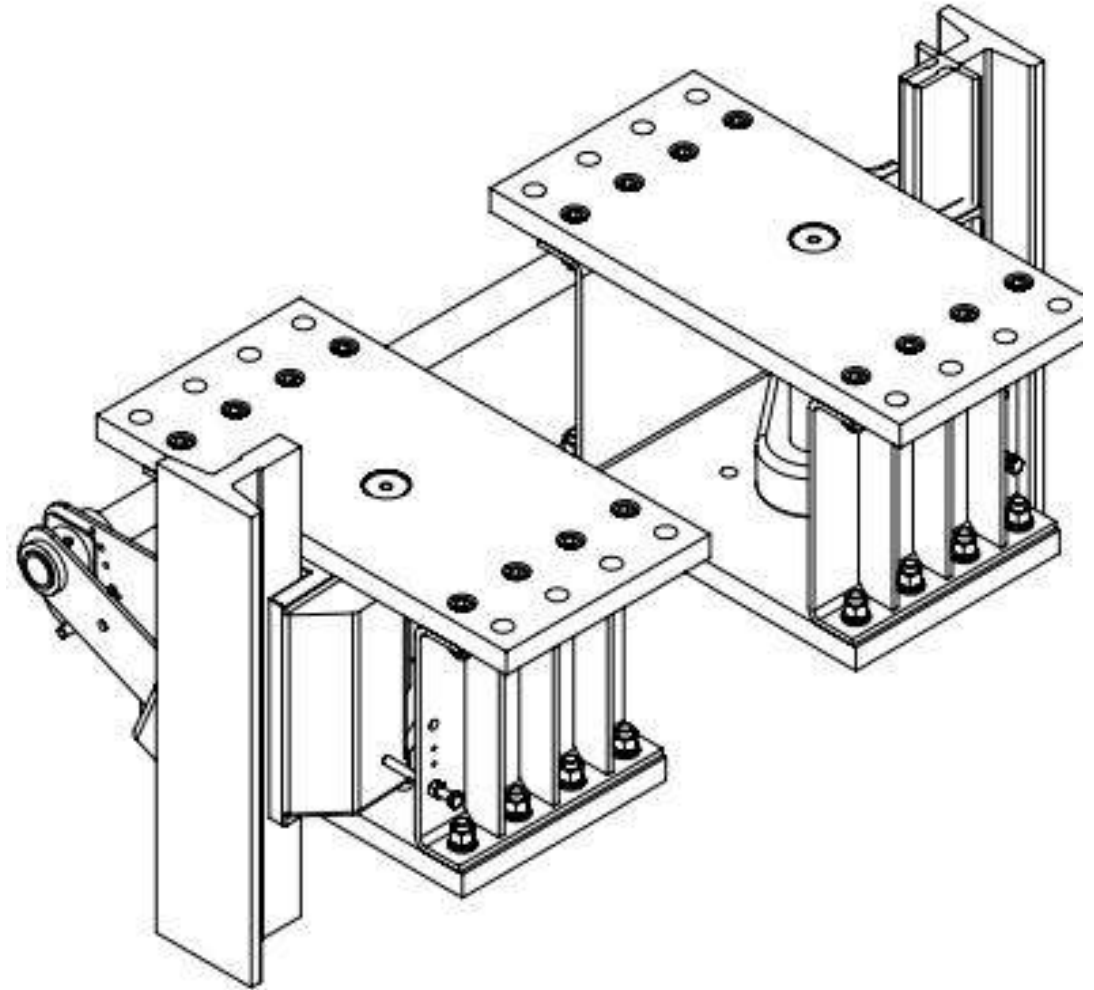


## Parameters of Safety gear

型号Type: LSG16

- $P+Q=30,000\sim 60,000\text{Kg}$
- 导轨宽度Width of guide rail  
60,000Kg--31.75mm T140-3  
30,000Kg--28.6mm T140-2
- 导轨润滑状态:Oil or Dry
- 额定速度RS: $\leq 0.63\text{m/s}$
- 动作速度TS: $\leq 0.8\text{m/s}$

60吨已有GB报告



## Parameters of Safety gear

订购时需要提供的参数

Parameters to be provided when ordering

型号Type

额定速度Rated Speed

导轨导向面宽度Width of guide rail

导轨表面润滑状态 Oil or Dry

总制停质量Total mass  $P+Q$ （轿厢停在最高层，算作用在轿厢上的重量）

总制停质量 $M=P+Q+M1+M2+M3$

其中:

$P$ ---空轿厢重量, 含轿架Kg

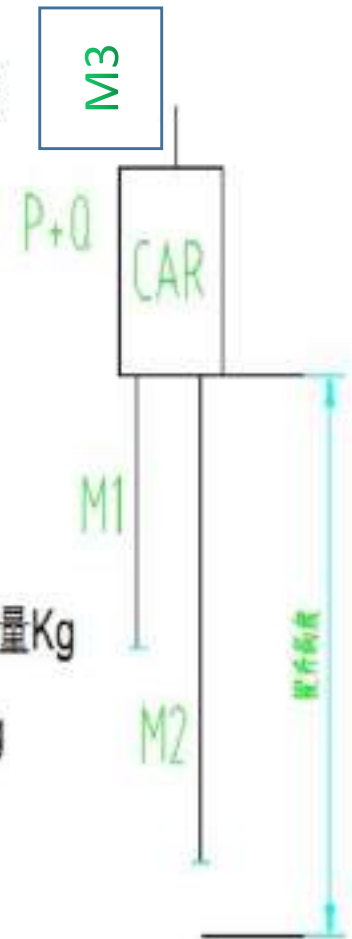
$Q$ ---额定载重量Kg

$M$ ---总制停质量Kg

$M1$ ---作用在轿厢上的随行电缆重量Kg

$M2$ ---作用在轿厢上的补偿重量Kg

$M3$ ---轿厢上部的钢丝绳重量Kg



## Parameters of Overspeed Governor

型号Type: LOG01



轮直径PD mm	φ200	φ250	φ315
额定速度 m/s	0.15~1.75	1.0~2.0	2.5~3.0
钢丝绳直径mm	φ6	φ8	φ8
钢丝绳规格	6X19	8X9	8X9
张紧力N	≥600	≥600	≥600
提拉力N	≥500	≥500	≥500
提升高度M	≤90	≤120	≤130



●有机房和无机房均可使用For MRL & MR



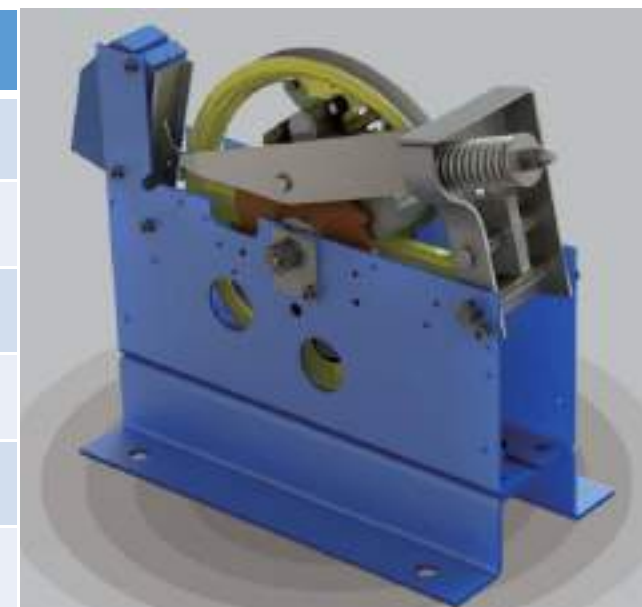
# Parameters of Overspeed Governor

Liftech

型号Type: LOG03



轮直径PD mm	φ200	φ240	φ305
额定速度 m/s	0.15~1.75	1.0~2.5	2.5~3.0
钢丝绳直径mm	φ6	φ8	φ8
钢丝绳规格	6X19	8X9	8X9
张紧力N	≥280	≥280	≥280
提拉力N	500~1200	500~1500	500~1500
提升高度M	≤90	≤120	≤130



●有机房使用For MR

# Parameters of Overspeed Governor

型号Type: LOG20

轮直径PD mm	φ320	φ480
额定速度 m/s	3.0~6.0	6.0~8.0
钢丝绳直径mm	φ8	φ8~10
钢丝绳规格	8X19+IWS	8X19+IWS
张紧力N	≥600	≥1000
提拉力N	1000~2000	1000~2000
提升高度M	≤180	≤300

● 3.0~6.0m/s已有报告



## Parameters of Overspeed Governor

---

订购时需要提供的参数

Parameters to be provided when ordering

型号Type

额定速度Rated Speed

有机房或无机房 MRL OR MR

滑轮直径Pulley Diameter

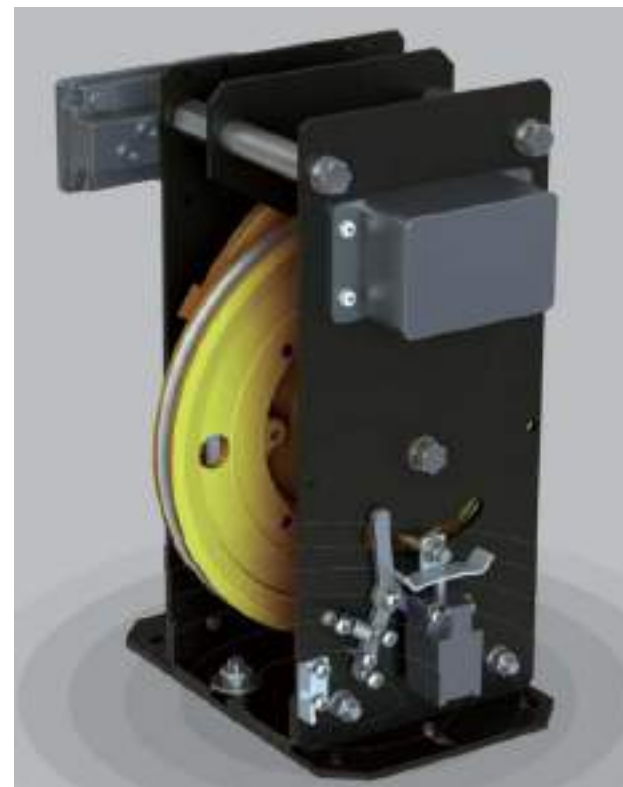
钢丝绳直径Rope Diameter

触点数量Number of contacts

符合标准： CE or GB



夹绳器  
Rope Brake



轿厢意外移动保护触发装置  
UCMP

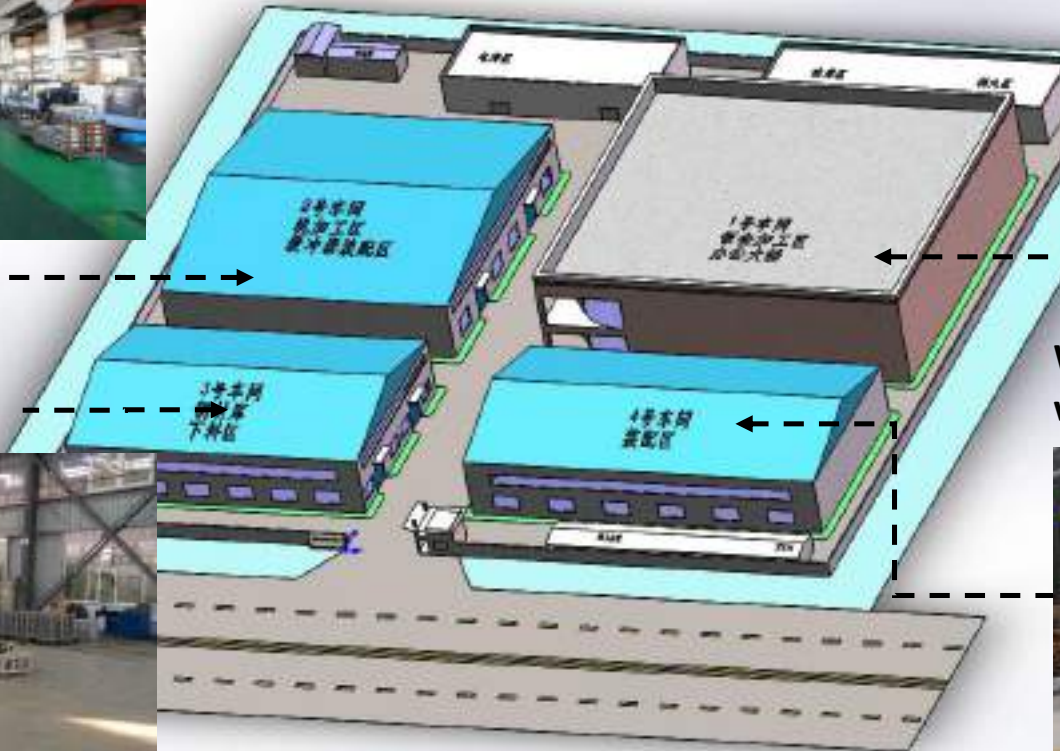


# Shanghai facility

**Workshop No.2 CNC machining and FANUC robotic welding**



**Workshop No.1 CNC machining and assembly of other products**



**Workshop No.3 assembly**



**Workshop No.4 material warehouse and preparation**



The Shanghai manufacturing facility has 18000 square meters of shop-floor space (four workshops) and 1200 square meters of office space. Another satellite plant for painting and sheet metal processing in Wuhu

Thank you very much !

Contact:  
Hrshikesh Dave  
Ansh Industries  
C27, Indradeep CHS, LBS Marg,  
Ghatkopar - west  
Mumbai 400086  
Cell: +91 9819575511 / 8369942597  
Email: [hrshikesh@anshindustries.com](mailto:hrshikesh@anshindustries.com)  
[www.anshindustries.com](http://www.anshindustries.com)