



ANSH
INDUSTRIES

Company Profile

C27, Indradeep CHS. LBS. Marg, Ghatkopar (West), Mumbai - 400086.

Mob.: +91 9819575511 / 8369942597

Email : hrishikesh@anshindustries.com • www.anshindustries.com

About us

Ansh Industries is new founded company established in 2012 and is headed by Hrishikesh Dave who has past elevator and escalator experience of 17 years from reputed MNC companies and in the field of Design Engineering, projects, procurement and Sales, of course import purchase and logistics is our strength. Ansh Industries is formed, mainly focusing in elevator components, after initial settlement on product configuration, we started trading activities in Gearless machines Monadrive/ Mato Drive, Auto door systems (NBSL and equivalents), safety parts like oil buffers, progressive safety gears, speed governors, bottom pulley with weight, terminal switches, guide shoes, roller guides, guide rails, etc...



Market area was mainly low and mid segment which was not well organised and do not have better sources for quality product at much reasonable rates. Later we also cater all variety of spares for escalators of many well known brands in India and abroad.

We believe in creating value to our customers. We fully understand customer requirements and then after healthy interactions, we optimised the product specifications and provide solution based cost effective offers.

Our goal is always achieving win-win situation



Ansh Industries

C27, Indradeep CHS, LBS Marg, Ghatkopar (west), Mumbai 400086

Tel: +91 9819575511/836 9942597 | GSTIN 27ADVPD4327M1Z2

AI - 0001

Car Sliding Guide Shoe

Rated Speed \leq 1.75 m/s
Positive force: 1050N
Match with Guide rail: 9,10, 15.88, 16mm



AI - 0007

Tension Device with Weight

1. A heavy block 11kg /18kg suitable for lifting height of lift = 60m.
2. This up tight device weights a straight set & B size adjustable.



AI - 0002

Car Sliding Guide shoe High speed

Rated Speed \leq 2.5 m/s
Positive force: 1450N
Match with Guide rail: 10, 15.88, 16mm
Car Roller Guide shoe



AI - 0008

Oil Cups

Capacity 250ml / 500ml



AI - 0003

Car Roller Guide Shoe

Rated Speed \leq 2 m/s
For Maximum rated load 1800kg
Match with Guide rail: 9, 10, 16mm
Roller dia: 125mm



AI - 0009

Axial Flow Fan

Blade Size : 300 mm



AI - 0004

CWT Roller Guide shoe

Rated Speed \leq 2mps
For Maximum rated load 1800kg
Match with Guide rail: 9, 10, 16mm
Roller dia: 80mm



AI - 00010

Oil Buffer

Suitable for 1mps - 2.5mps



AI - 0005

CWT Sliding Guide shoe for hollow rail

Rated Speed \leq 1.75mps
For Maximum rated load 1150kg
Match with Guide rail: 10, 16mm



AI - 00011

Compensating Chain

1) 6mm weight 0.88kg/m
2) 8mm weight 1.49kg/m
3) 10mm weight 2.52kg/m



AI - 0006

CWT Sliding Guide shoe for 5mm solid rail

Rated Speed \leq 1.0mps
For Maximum rated load 1000kg
Match with Guide rail: 5mm thk



AI - 00012

Limit Switch_NC_S3



AI - 00013

Over Speed Governor MR/MRL (Mech.)

LOG03-200 / LOG03-240

1. Rated Speed: = 0.63 m/s, 0.75m/s, 1.0m/s, 1.5, 1.6m/s, 1.75m/s, 2.0m/s, 2.5m/s.
2. Suitable Location: Capsule side on the heavy side.
3. Rope Wheel Diameter: 240mm.
4. Speed Limit Wire Rope: Standard 8mm, fittings selection 6mm.
5. Wiring Instructions: The speed limit has action switch connection safety loop



AI - 00019

Door Sensor SFT

1. Model: E-2000 / E-2000-L, E-2000-G/ E-1500/ E-1000/E-500
2. Criss Cross Beam Technology
3. Sensing Range : 4 Mtr
4. Input Voltage : 175 - 300V AC



AI - 00014

Over Speed Governor MRL-Solenoid

LOG01-200 / 240

1. Rated Speed: = 0.63 m/s, 0.75m/s, 1.0m/s, 1.5, 1.6m/s, 1.75m/s, 2.0m/s, 2.5m/s.
2. Suitable Location: Capsule side on the heavy side.
3. Rope Wheel Diameter: 200mm / 240mm
4. Speed Limit Wire Rope: Standard 8mm, fittings selection 6mm.



AI - 00020

Blower Fan

270 / 330 / 430mm
4.5 CFM



AI - 00021

Damping Pad



AI - 00022

Inspection Box



AI - 00015

Safety Gear

1. Rated Speed: V=0.25-2.5m/s
2. Allowable Gross Mass: 1200-4000kg
3. Width of guide rails: 10, 16mm



AI - 00016

OVERLOAD - Multi Rope Type

1. Roping 1:1
 2. Capacity : 999kg
 3. Supply Voltage : 24-48V DC4.
- MOQ is 10 Nos.



AI - 00023

OVERLOAD - Multi Rope Type

1. Roping 1:1, 2:1, 4:1
2. Capacity : 4000kg
3. Supply Voltage : 230V AC
4. MOQ is 10 Set.



AI - 00017

OVERLOAD - Platform Type

1. Capacity : 800kg / Sensor
2. Supply Voltage : 230V AC
3. MOQ is 10 Set.



AI - 00024

OVERLOAD - Beam Type

1. Capacity : Unlimited
2. Supply Voltage : 230V AC
3. MOQ is 10 Set.



AI - 00018

OVERLOAD - Hydraulic Type

1. Capacity : 100 bar
2. Supply Voltage : 24-48 VDC
3. Operating Temp : -10°C / 80°C



AI - 00025

Car Bottom Damping Mat



AI - 00026

ACPM - Door Drive & Motor



AI - 00027

PU Buffer



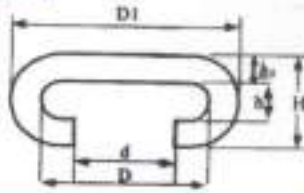


Ansh Industries

C27, Indradeep CHS, LBS Marg, Ghatkopar (west), Mumbai 400086

Tel: +91 9819575511/836 9942597 | GSTIN 27ADVPD4327M122

Handrails



	SWE	SDS	OTIS-800
(d)	33 ⁺³ ₋₁	39 ⁺³ ₋₁	39 ⁺² ₋₁
(D)	62±1	62±1	60±1
(DI)	82±1	80±1	76±1
(h)	12±0.0	10.6±0.0	9.5±0.0
(h1)	12±1	9.5±1	10±1
(H)	34±1	28.5±1	28±1

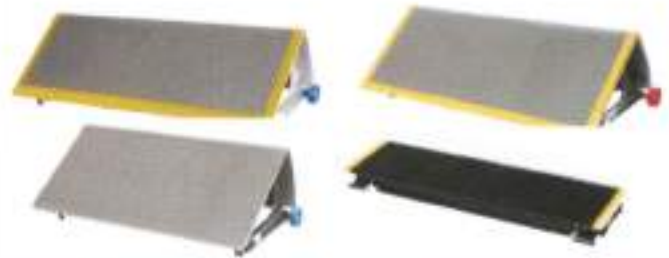


Step Chains for Escalators and Travellators Commercial / Public and outdoor type



Steps

Aluminum Steps with yellow demarcation (Painted and plastic inserts)
Fabricated Stainless steel Steps. Size EK
(Nominal Step width) 800mm and 1000mm.



Rollers:



Dia 70 x 25,
Bearing 6204-2RS



Dia 76 x 25,
Bearing 6204-2RS



Pallets for Travellators



Yellow Demarcations

Aluminum Comb Plates



22 Teeth Center plate



Reversing Chain set



Traffic Light Indicator



Skirt brush (Single / Double layer)



Auto Start Radar Sensors



Friction wheel



Automatic lubrication Unit



Step Chain

Auto Start Sensor

Step Missing Device Sensor



Handrail Speed Monitoring Sensor

Start & Stop Key Switch

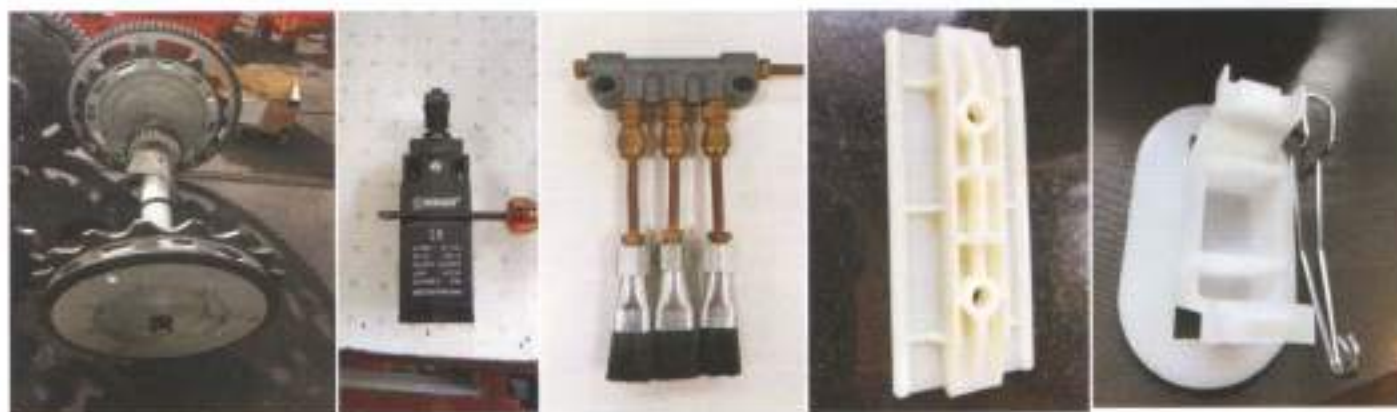
Brake Coil



Handrail Inlet Cover

Skirt Brush Holder

Motor Coupling



Main Drive Shaft Assembly

Manual Reset Switch

Auto Lubrication Brush

Handrail Guide



Handrail Light

Comb Light

Skirt Brush Light

Our Services

✚ Import and stockiest of Elevator parts like

- Car Sliding Guide shoe
- Car Roller Guide shoe
- Face mount sliding guide shoe
- Cwt Roller Guide shoe
- Cwt Hollow Rail Guide shoe
- Cwt sliding guide shoe for 5mm Rail
- Oil cups 250ml
- Progressive safety gears LSG01 / LSG08
- Over speed governors LOG03 - MR/MRL
- Over speed governor sleek LOG01 - MRL
- Tension Device with weight
- Oil buffers
- PU Buffer
- Compensating Chain 8MM
- Blower fan
- Axial flow fan
- Limit switches
- Gearless machines (MATO Drive)
- Complete OEM kit for elevators
- Home lift Solutions (Hydraulic Kit and Traction)

✚ Escalator parts

- Aluminum Steps
- Step chains
- Comb plates
- Handrails
- Rollers
- Skirt brush
- Skirt Lightings / Handrail Lightings / Comb plate lights / Step gap lights
- Auto lubrications
- Radar sensors / Auto start sensors
- Safety switches and sensors
- PLC with program
- Any part of any brand of escalators
- Full kit of Escalators

✚ Project purchase Consultancy that includes vender evaluation to final costing and delivery till job site

Our Association

We are delighted to be Authorised agent of a brand "LIFTEC" a shanghai China based giant who is Pioneer in supplying safet parts to many MNC across Globe, They are more renowned for Hydraulic Oil Buffers for high sped lifts upto 10mps



We also Introduces us as a company who can be a vital link for modernisation and service area of Elevators and Escalators of any brand. We can offer a solution based supplies here.

Why US?

Ansh Industries always consider quality of product at prime importance and over years of experience, we understand the market requirements in India so can cater client over best, So satisfied client is our ultimate goal.

Values :

- ☛ Integrity: Insist on being honest and trustworthy to our customers and employees, our integrity can not be compromised under any circumstances
- ☛ Responsibility: to instill a sense "ownership" and "proactiveness", not just for management but for sub-ordinates, peers and most importantly for one self; "Greater responsibility leads to more opportunities"
- ☛ Action: Execute with no delay, full commitment and effective follow-up reviews, act to achieve person and company goals.
- ☛ Sustainable quality products

Shanghai Liftech United Technologies Co.,Ltd.
Add : No.5333 Beiqing Road, Shanghai,
P.R.China,201715
<http://www.shliftech.com>
Tel : 021- 6769 0698
Fax : 021- 6769 1797
E-mail : info@shliftech.com

ANSH INDUSTRIES
A24 Ghatkopar Industrial Estate off LBS Marg,
Ghatkopar (west), Mumbai - 400086.
Mob.: +91 9819575511 / 8369942597
Email : hrishikesh@anshindustries.com
www.anshindustries.com